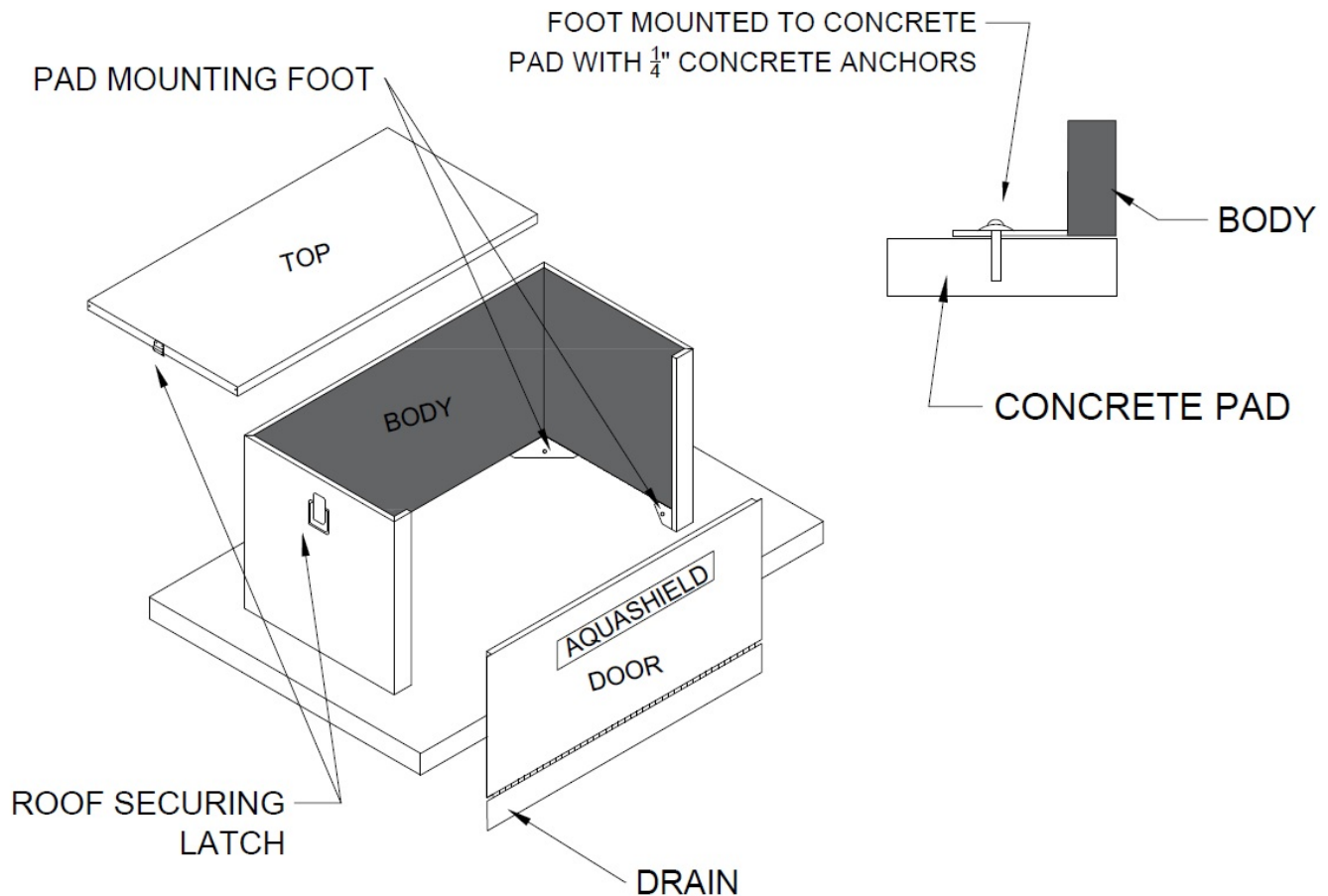


**INSTALLATION  
INSTRUCTIONS**

**BFP1-S, BFP2-S**



**ENCLOSURE ASSEMBLY INSTRUCTIONS**

1. Provide a concrete mounting pad according to the "Mounting Pad Preparation" sheet.
2. Remove top from the enclosure and set the enclosure around the BFP.
3. Inside the enclosure, mark or drill the concrete pad through the holes of the mounting angle bracket.
4. Remove the enclosure and drill the marked holes with the 1/4" masonry bit provided.
5. Set the enclosure in place and secure the enclosure with the masonry anchors provided.
6. Install heat cable per manufacturer's instructions. **Note: Provide GFI receptacle and follow all applicable electrical codes and regulations.**
7. Set top on enclosure and fasten hasp. For locked vandal protection, padlocks can be installed on the hasp.
8. Remove the protective plastic film from the enclosure. **Note: Failure to remove the plastic will cause damage to the exterior finish of the enclosure.**