

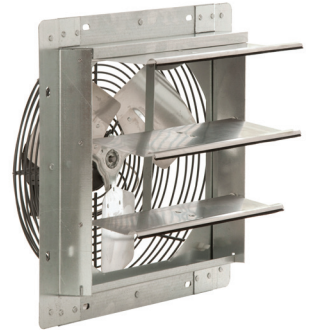
EXHAUST FANS

HVAC/R fact sheet

SHUTTER-MOUNT EXHAUST FANS

These easy-to-install, highly efficient exhaust fans have automatic shutters, making them ideal for use in ventilating retail stores, offices, factories, work shops, garages and farm buildings. They are shipped fully assembled with 115 Volt totally enclosed motors and an OSHA-compliant gray polyester powder-coated wire guards. UL and C-UL Listed.

PROPELLER DIA. (IN.)	CFM @ 0.000" SP	CFM @ 0.125" SP	MOTOR RPM	MOTOR HP	SQ. OPENING REQ. (IN.)	ITEM NO.
SPEED CONTROLLABLE						
7	140	—	1550	1/25	8-1/2	1HKL9
10	585	285	1550	1/25	10-1/2	1HLA1
12	800	470	1550	1/25	13	1HLA2
16	1095	720	1550	1/20	17	1HLA3
18	1860	850	1075	1/15	19	1HLA4
20	2830	2255	1100	1/4	21	1HLA9
24	3240	2485	1075	1/4	25	1HLB3
SINGLE-SPEED						
18	2590	2190	1725	1/4	19	1HLA5
20	2955	2450	1725	1/4	21	1HLA8
20	3635	3115	1725	1/3	21	1HLA7
24	3270	2515	1075	1/4	25	1HLB2
24	3970	3240	1075	1/3	25	1HLB4
30	6075	4195	825	1/3	31	1HLB5
36	8225	6480	825	1/2	37	1HLB6
TWO-SPEED						
24	3985/3760	3255/2995	1075	1/3	25	1HLB1

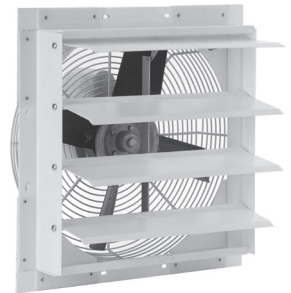


1HLA2

CORROSION-RESISTANT SHUTTER-MOUNT EXHAUST FANS

These easy-to-install exhaust fans are constructed with a fiberglass automatic shutter and frame with stainless steel hardware for superior resistance to corrosive gases and vapors. The propellers are fiberglass-reinforced polypropylene. They are shipped fully assembled with 115 Volt totally enclosed motors and an OSHA-compliant epoxy-coated wire guard. UL and C-UL Listed.

PROPELLER DIA. (IN.)	CFM @ 0.000" SP	CFM @ 0.125" SP	MOTOR RPM	MOTOR HP	SQ. OPENING REQ. (IN.)	ITEM NO.
10	524	379	1550	1/20	10-1/2	1BLH6
12	1100	799	1625	1/8	13	1BLH8
16	2005	1678	1625	1/6	17	1BLJ1
18	2790	1961	1075	1/4	19	1BLJ3
20	3642	2838	1075	1/3	21	1BLJ5
24	4876	4197	1075	1/2	25	1BLJ7



1BLJ1

GUARD-MOUNT EXHAUST FANS

Designed for low-pressure exhausting and cooling applications. Sturdy steel wire guards are OSHA-compliant with a gray polyester powder-coated finish with 4 mounting loops for easy installation. They are shipped fully assembled with 115 Volt totally enclosed motors. UL and C-UL listed.

PROPELLER DIA. (IN.)	CFM @ 0.000" SP	CFM @ 0.125" SP	MOTOR RPM	MOTOR HP	OUTSIDE DIA. (IN.)	ITEM NO.
7	230	—	1550	1/25	9-5/8	1HKL2
10	595	405	1550	1/25	11-11/16	1HKL3
12	820	535	1550	1/25	13-1/2	1HKL4
16	1060	585	1550	1/20	17-3/8	1HKL5
18	2515	1780	1725	1/4	20-13/16	1HKL6
20	2600	1685	1725	1/4	22-3/4	1HKL7
24	3840	2690	1075	1/3	26-7/8	1HKL8



1HKL4

Find it at Grainger.

Call or visit your local branch or go to grainger.com/dayton for complete product line information.